



April '23

NEWSLETTER

أهلا بك خوش آمدی আপজ স্বাগত শু স্বাগত
Witamy soo dhaweyn Bienvenue بنه راغلاست



Head writes

I hope you all had a fantastic two week holiday and Eid Mubarak to everyone who has been celebrating this weekend. It is an action-packed term coming up, with visits to Hawks gym, Samba Drumming, Gloucestershire Cricket coaching, Bristol Rovers coaching, a visit from a basketballer, Year 5/6 building up to play auditions, KS1 and KS2 SATs, the coronation bank holiday and a whole host of PTFA events. Do join us on Friday afternoon for what is one of the highlights of the year, our Eid celebration picnic. Mr Laken.



PTFA SAVE THE DATES!



Friday 28th April we will be having an **Eid celebrations**. There will be food and refreshments on sale from 3pm till 4pm.

Saturday 10th June we will be holding our **Summer Fair**. There will be food, henna, face painting, candy floss and much more.

If you would like to volunteer for either event either to help organise or help out on the day email bannermanroadpta@gmail.com

Cake sale dates and classes to donate cakes:

- 28/4 Banana Tree
- 12/5 Mango Tree
- 26/5 Bay Tree
- 9/6 Lemon Tree
- 23/6 Lime Tree 7/7 Cherry Tree

Dates

27/4 and 2/5 Strikes—see letter

28/4 Food bank collection

28/4 Eid picnic 3pm—4pm

1/5 Bank holiday

8/5 Coronation bank holiday

9/5 - 12/5 KS2 SATS week



Green Readers

Children at Bannerman Road are asked to read at least 4x per week at home with an adult. We would plead with you to read with your child as this is shown to have the greatest impact on the progress your child makes. We give individual and class rewards for these every week. Let's get reading!



There is no app to replace your lap

Food Bank

We are collecting for our local food bank this Friday. If you can, please bring any of the items listed here. Please do not feel you have to contribute during this difficult time for all. Take items to class.

SHOPPING LIST

- Milk (UHT or powdered)
- Fruit juice (long life)
- Tinned Fruit
- Pasta sauces
- Tinned Potatoes
- Tinned vegetables
- Cereals
- Tinned rice pudding
- Tea bags
- Instant coffee
- Instant mash potato
- Tinned meat/fish
- Jam
- Tinned Vegetarian meals
- Biscuits or snack bars
- Toiletries

School Attendance

Last week our overall school attendance was **92%**. If your child is unwell, you **must** call the school office on 0117 377 2080, **every day** by 9am, to let us know, leaving your child's name and class.

Polite reminder: All parents and carers have a responsibility to get their children into school on time, by 8:45, each day. If your child arrives late, this will be marked on the register. Arrival after 9:10am will be considered an unauthorised absence and may be subject to a Penalty Notice. Penalty notices are a fine of £60 per child, per adult.

Unfortunately we are unable to authorise holidays during term time. If you take your child away during term time, they will be marked as unauthorized, and you may face a Penalty Notice. **If you are planning on going away, you must complete a holiday request form. If your child doesn't attend school and we have not been given a reason, the school are obliged to contact Education Welfare, who will investigate your child's absence.**

Homework

From this term, we will be sending optional topic homework at the start of each term. This will be a range of activities that the children can pick from.

There will be no sanction for not doing them, but any work completed will be shared and celebrated.

A reminder that ALL children should completing:

- ◆ spellings
- ◆ Reading 4x per week
- ◆ Multiplication tables

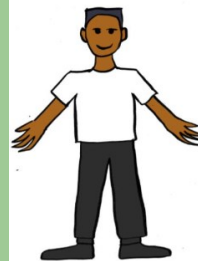


Clubs next year

We are looking to expand our range of clubs for next year. If you have a skill you'd like to share with the community, let us know!

- ◆ Cooking
- ◆ Music
- ◆ Languages
- ◆ Sport

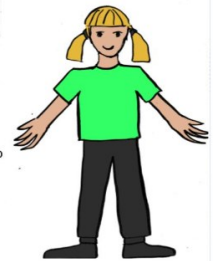
PE Kit/Uniform



PE/forest school

Clothes

- Hijab plain black or white
- School sweatshirt with logo
- White or green t-shirt
- Black trousers
- Black trainers



Please stick to this as closely as possible and only send children in PE kit on PE days. See your teacher if unsure.

If you are worried about a child or young person who could be in danger, please contact:

First Response on 0117 903 6444
or the NSPCC on 0808 800500
or contact the police directly by dialing 101.



In an emergency always contact the police by dialing 999.

Family Support

If your child and/or family needs support, please don't hesitate to call us on 01173 772 080 and ask to speak to;

Anna Hicks - Family Support Worker (for housing, immigration queries, benefits, access to foodbanks etc.)

anna.hicks@bannermanroadbristol.org

Sian Lennox-Gordon - Pastoral Lead (for support with mental health, behaviour or attendance)

sian.lennox-gordon@bannermanroadbristol.org

If you have a concern or would like to arrange a meeting to discuss any of these issues, including bullying or safeguarding please contact us via phone or email.

